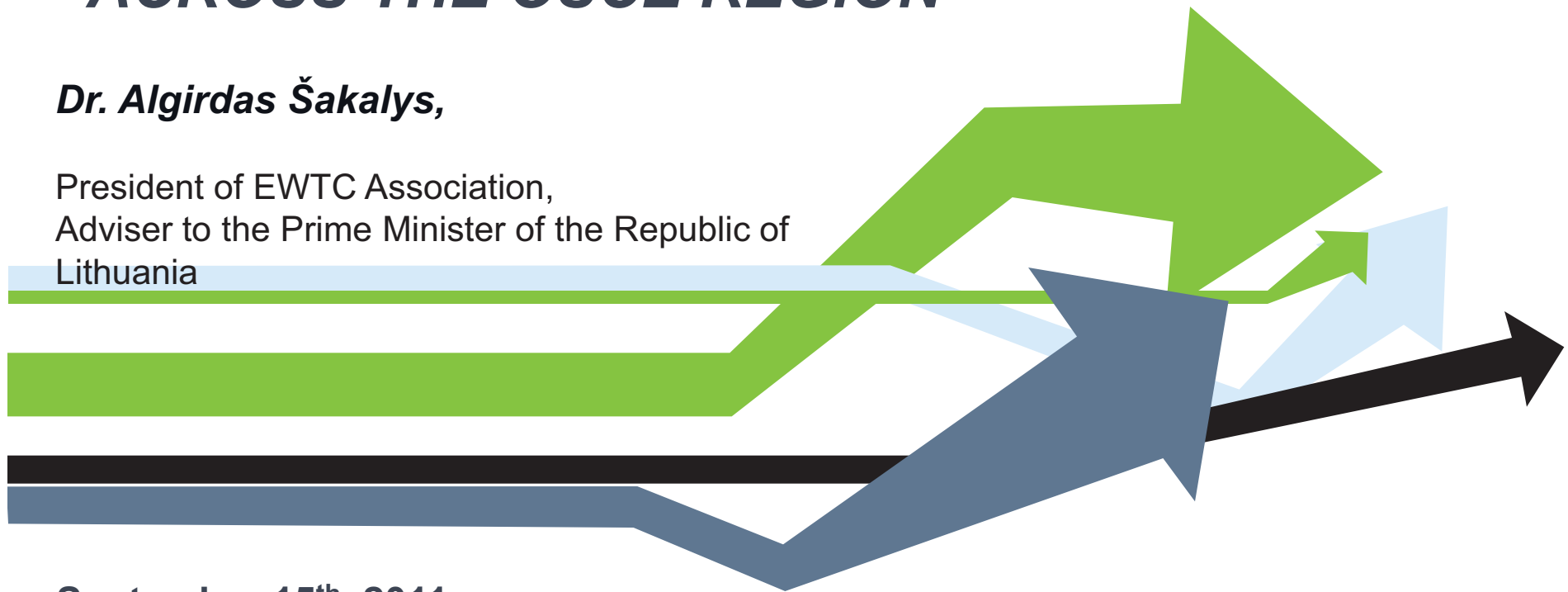


VISION ON REGIONAL AND INTER-REGIONAL CO-OPERATION AND PROMOTING THE INTEGRATION ON TRANSPORT NETWORKS ACROSS THE OSCE REGION

Dr. Algirdas Šakalys,

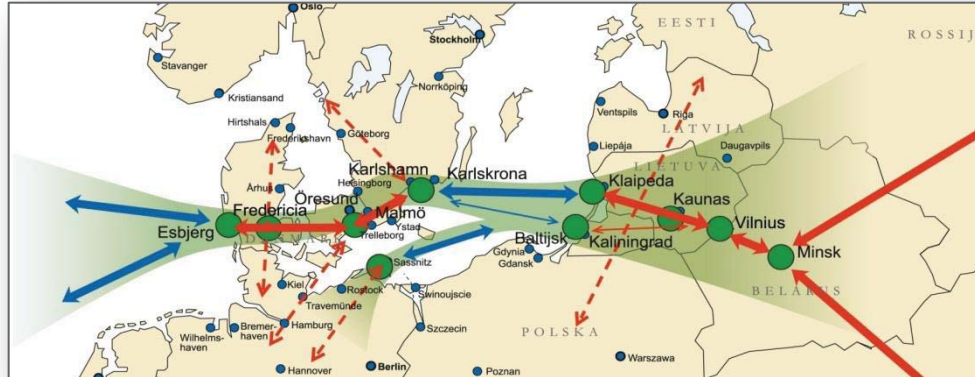
President of EWTC Association,
Adviser to the Prime Minister of the Republic of
Lithuania



September 15th, 2011

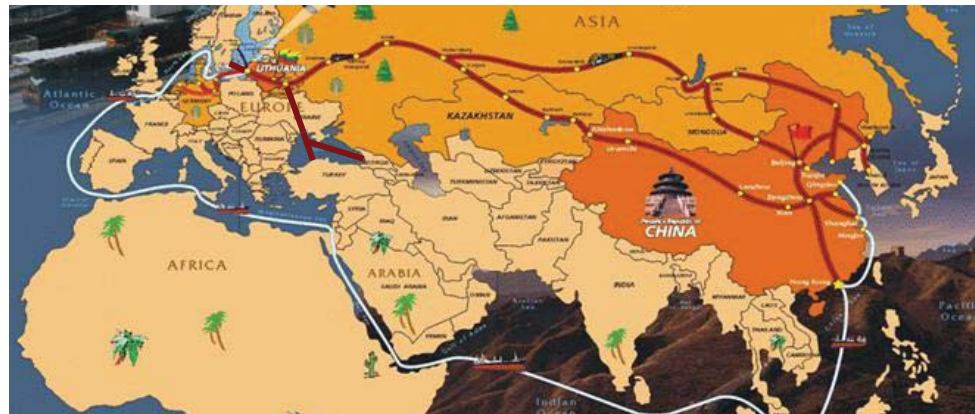
EAST-WEST TRANSPORT CORRIDOR

EWTC IN THE SOUTHERN PART OF BSR



- Main hubs:**
- Esbjerg
 - Taulov-Fredericia
 - Köpenhamn/Malmö
 - Karlshamn
 - Karlskrona
 - Klaipėda
 - Vilnius
 - Kaunas
 - Kaliningrad
 - Sassnitz

EAST WEST TRANSPORT CORRIDOR (EWTC) IN THE GLOBAL CONTEXT



Denmark	SSS – Baltic Sea	Kaliningrad	Byelorussia	Russia	Kazakhstan		China
Sweden		Lithuania		Ukraine	Black Sea	TRACECA	
Germany					Turkey		

Source: MOTC Lithuania, 2009

Shuttle train Viking: Klaipeda - Minsk - Odessa;



- 6 times per week;
- 52 hours;
- 1 700 km;
- In 2010 carried 41,8 thous. TEU, or increased 5,8 percent compared to 2009.
- In 2011 expressed their willingness to join in: Georgia, Azerbaijan, Syria and Moldavia.

THE MAIN FUNCTIONS AND POTENTIAL OF EWTC ASSOCIATION



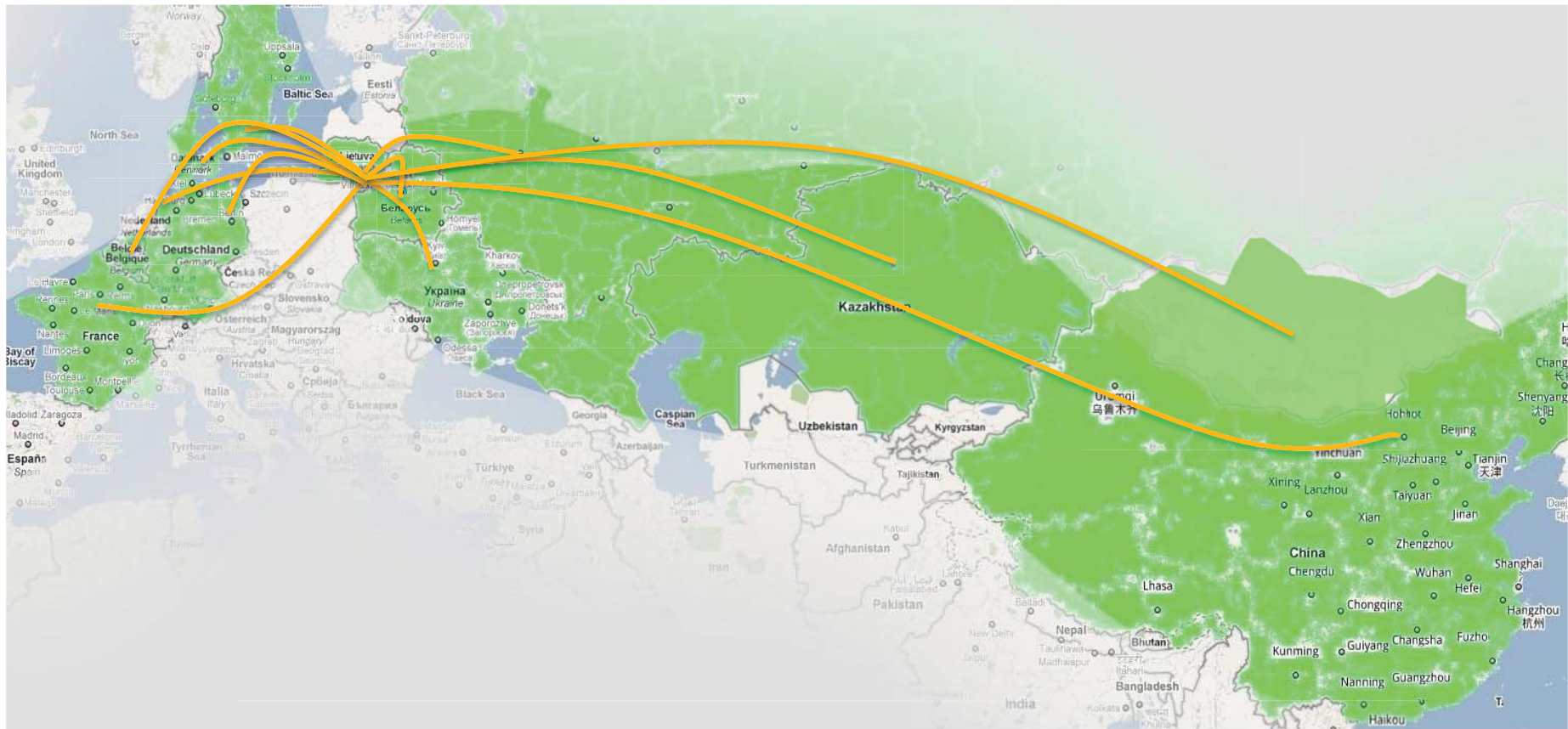
The East-West Transport Corridor Association (EWTCA) was established on the 29th June 2010 at the constitutive conference in Vilnius which attracted almost 100 participants.

Functions:

- to strengthen the co-operation between transportation, logistics companies, intermodal terminal operators, shippers and consignees, national, regional and domestic authorities, science and research institutions along the EWTC;
- to develop the links and services between the EWTC and different Europe-Asia regions;
- to initiate the simplification of procedures and documentation;
- to initiate of removing of bottlenecks in the development of infrastructure and operations;
- to initiate and promote implementation of common KPI's and services standards along EWTC (**with focus on green transport**);
- to promote co-operation between private and public sectors;
- to disseminate best practices and modern logistics solutions;
- to support IT networks development among EWTC partners;
- to represent the associated EWTC partners in the European Commission and international transportation organizations, as well as in national and regional authority institutions.

EWTCA consists of 7 business associations, 16 companies, 5 public administrative institutions, 2 universities. Altogether – approx. 2000 companies and institutions from 12 countries (Belarus, Denmark, Kazakhstan, China, Lithuania, Mongolia, France, Belgium (EIA), Russia, Ukraine, Sweden and Germany).

PARTNERS OF INTERNATIONAL EAST-WEST TRANSPORT CORRIDOR



Source: VGTU, CCITL 2011



MAIN CONCLUSIONS



- good practices related to the reduction of barriers and simplifications of border-crossing procedures (like Viking project) could be widely promoted in OSCE region;
- first success stories in the development EWTC demonstrate how could benefit from use of the innovative instruments such as the East West Transport Corridor Association in the further promotion integration of transport networks in Central Asia, South Caucasus, Russia, Eastern Europe and EU countries.



Thank you for your attention!

For more information: EWTCAscretariat@vgtu.lt

