

Statistics on International Migration: Main Sources and Challenges in Norway

Presentation to the IOM/OSCE/Higher School of Economics Seminar on Migration Statistics in the Russian Federation and the Broader Region

Moscow 25 - 26 March 2013

Eivind Hoffmann

Why statistics on international migration?

- To monitor, describe and analyse the movement of persons across Norway's international borders
- To monitor, describe and analyse the role and situation of immigrants in Norway
- To monitor, describe and analyse how the regulation of migration of foreigners to Norway is carried out

Substantive issues generating needs for migration statistics

- **Demographic structure and changes**
- **Integration:** participation in the national social and political institutions
- **Planning and operation of social institutions** (housing, schools, health institutions, transport facilities)
- **Migrant workers** and working migrants: their activities and working conditions
- **Diaspora**
- **Remittances**

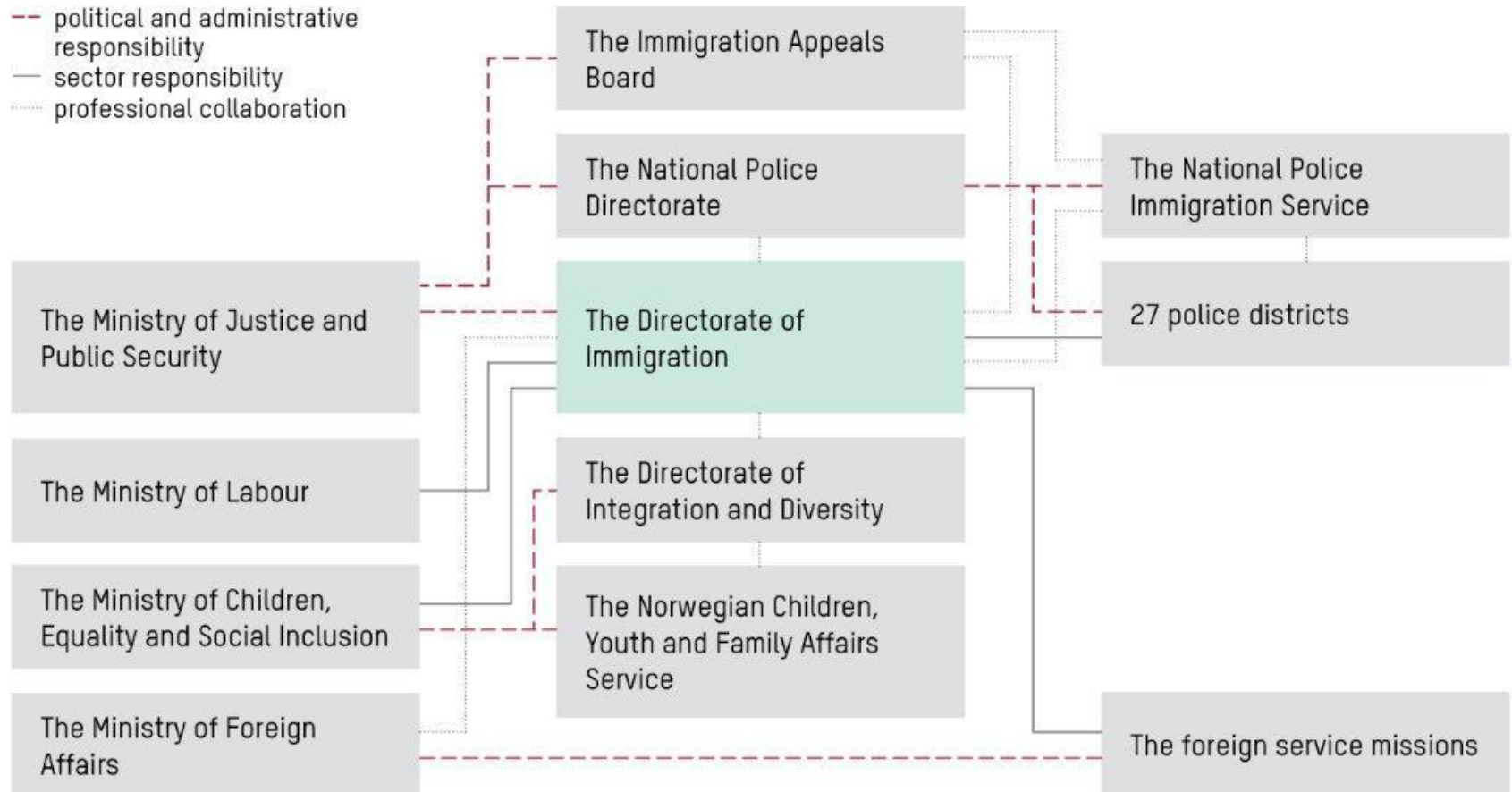
- **Regulating immigration:** Policy formulation, implementation and evaluation: are the right regulations implemented in the best way possible

- **International statistical compilations and comparisons**

Ministries in Norway concerned with international migrants

- **Ministry of Justice and Public Security (JD):** Immigration and asylum policies, except labour immigration policies
- **Ministry of Labour (AD):** Labour immigration policies
- **Ministry of Children and Equality (BLD):** Citizenship and settlement of refugees
- **Ministry of Foreign Affairs (MFA):** Consular services receiving applications from (some) foreigners to visit, live and work in Norway
- **Ministry of Education and Research (KD):** Foreign students and education for immigrant children
- **Ministry of Health (HOD):** Medical services to all immigrants

The Norwegian immigration administration



Main agencies involved with statistics on migrants and migration to Norway

Involved with regulating immigration and assisting immigrants

- **Norwegian Directorate of Immigration (UDI):** Central agency for immigration regulation – reports to JD, AD and BLD
- **Immigration Appeals Board (UNE):** Appeals body –reports to JD
- **National Police Directorate (POD):** Supervises all police activities – reports to JD
 - **National Police Immigration Service (PU):** Receives asylum applications, execute expulsions
 - **27 Police Districts:** Receive applications, arrest irregular foreigners
- **Directorate of Integration and Diversity (IMDi):** Settlement of refugees – reports to BLD
 - **Foreign service missions:** receives applications from (some) foreigners to visit, live and work in Norway

Others

- **Central Population Register (CPR):** All persons immigrating to and emigrating from Norway should report this to CPR
- **Tax authority (TA):** Register all foreigners and foreign firms with tax obligations
- **Social Security Administration (NAV):** Register all social security rights, and all hirings and separations of employees
- **Statistics Norway (SSB):** Produce statistics on migration and migrants based on registrations in CPR, UDI, NAV and TA

Main sources for statistics on international migration to and from Norway and on migrants

- **For actual movements to and from Norway and for persons present:** Registrations with the *Central Population Register (CPR)*
- **For characteristics of immigrants and persons present:** various administrative registrations (for taxes, social security, etc)
- **For characteristics related to the regulation of migration to Norway:** Registrations in the *Database for foreigners (UDB)*, made by UDI, PU, UNE and foreign service missions

Data Quality Concerns

- Scope
- Definitions
- Descriptive variables: their classifications and resolution
- Timeliness and frequency
- Comparability
 - Over time
 - Between data and series from different sources
 - Between regions and between countries

Norwegian statistics on demographic flows and stocks

- Residents and others who are present/absent
- Duration of presence/absence
- Citizens v. foreigners
- Emigrants and diaspora
- Workers and non-workers
- Education and social conditions

The different pieces should fit together



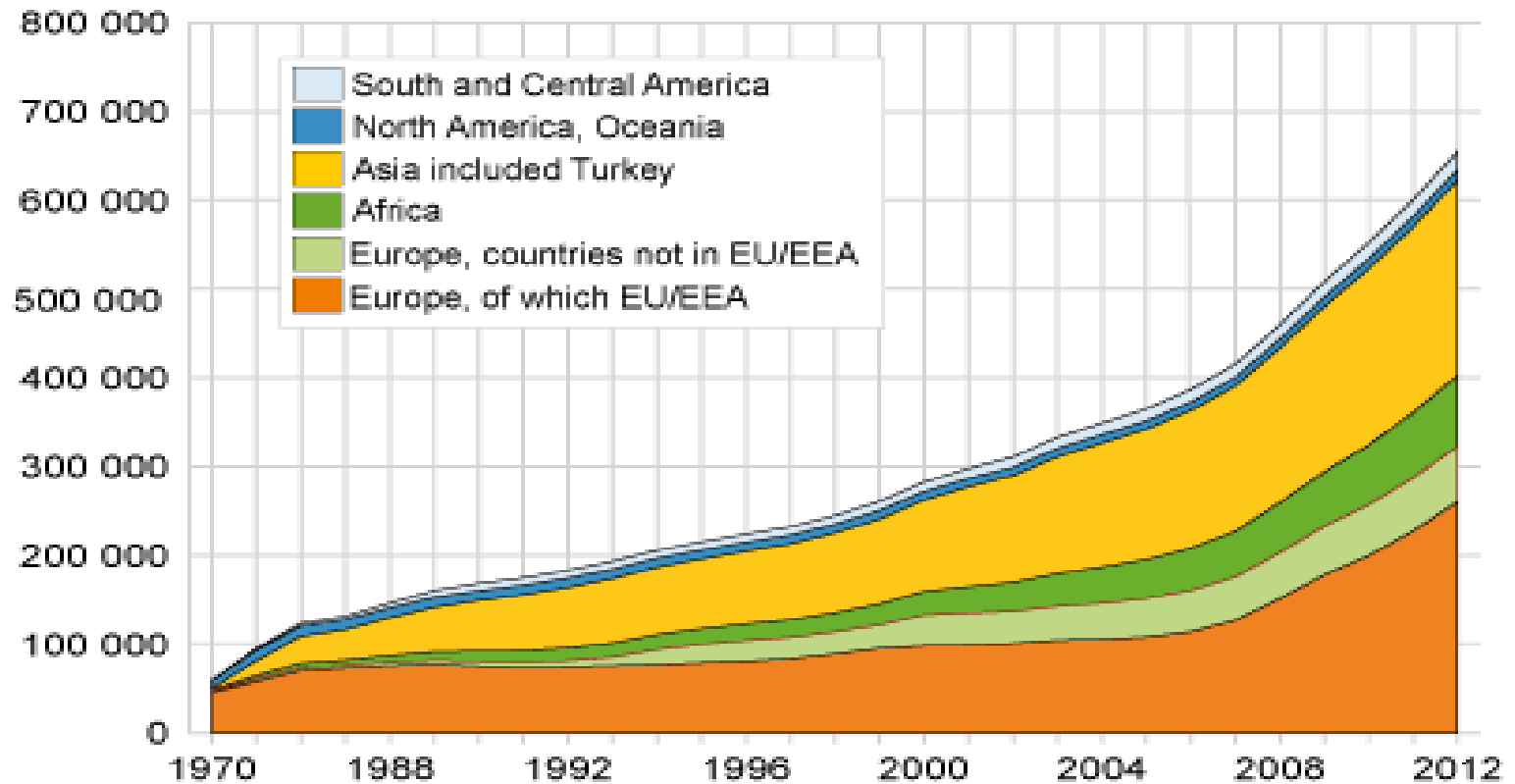
Examples of statistics from Norway

Websites

- Statistics Norway (in English and Norwegian):
 - http://www.ssb.no/english/subjects/00/00/10/innvandring_en/
- UDI (mostly in Norwegian):
 - <http://www.udi.no/Norwegian-Directorate-of-Immigration/Oversiktsider/Statistikk-/>

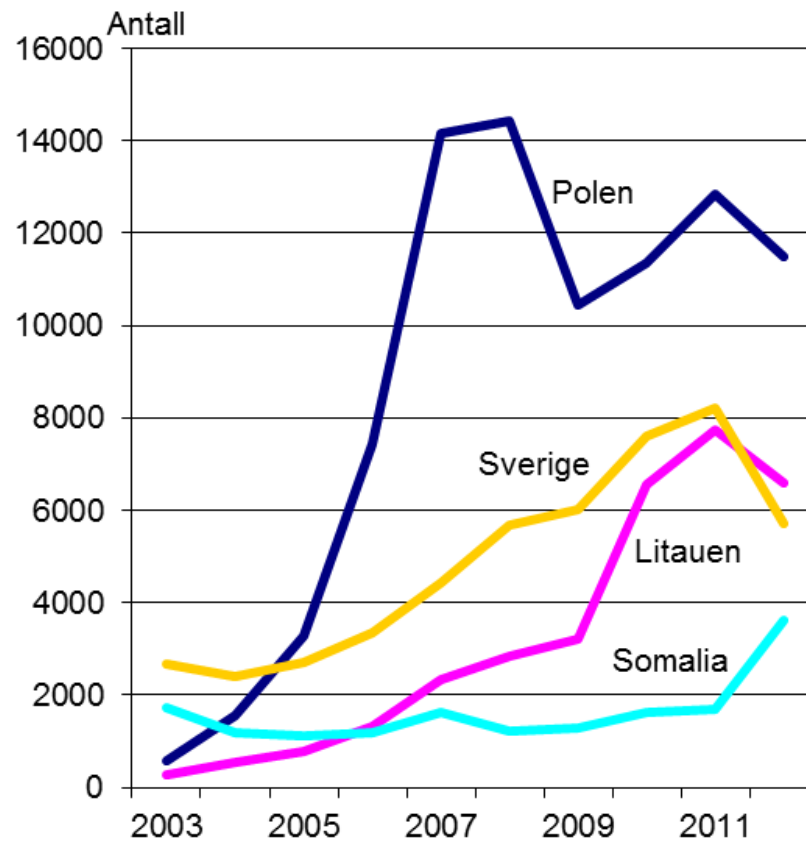
Immigrant population in Norway, 1970 - 2012

Immigrants and Norwegian-born to immigrant parents, by country background. 1970-2012



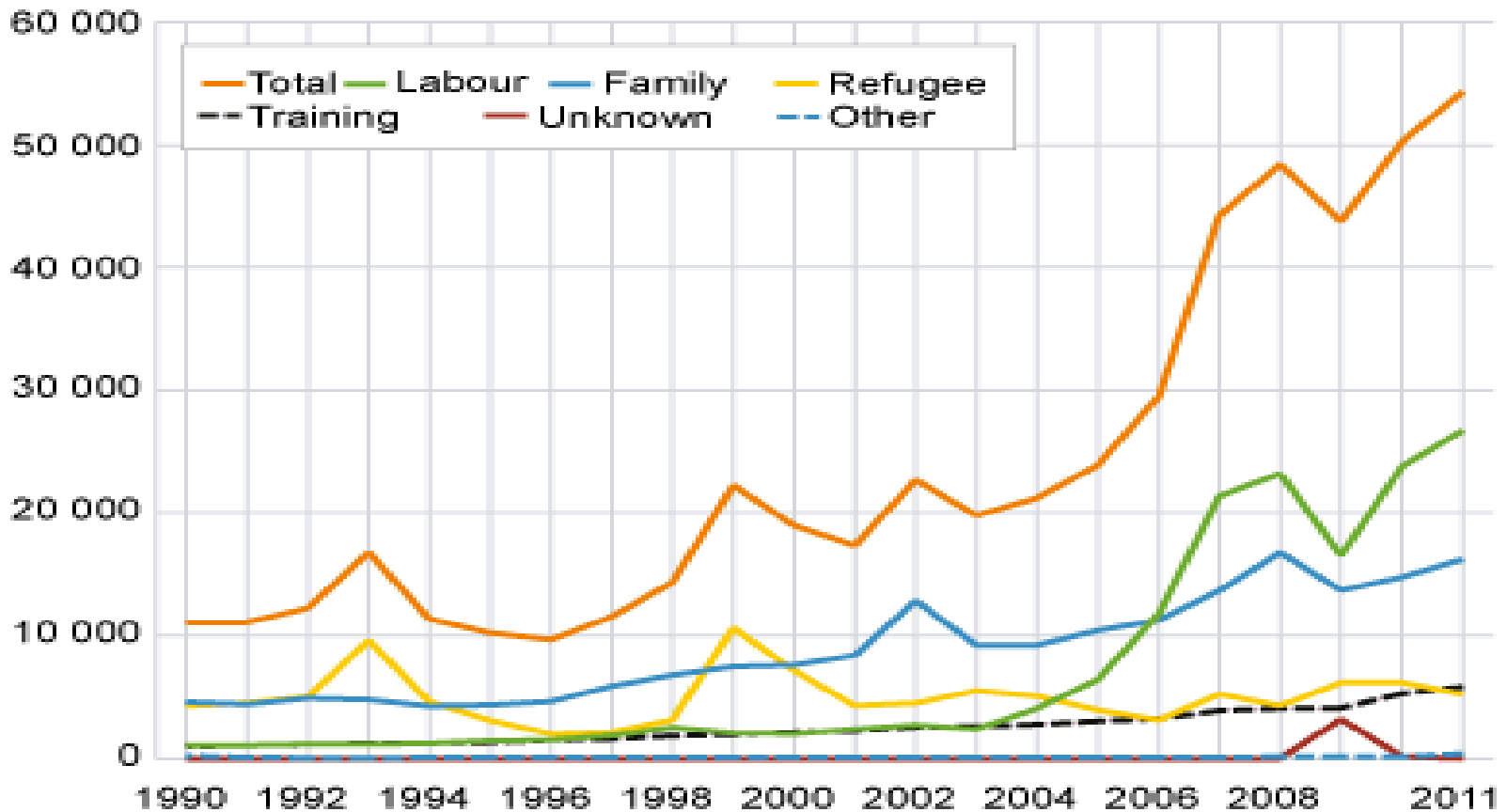
Immigrants to Norway: main countries of origin 2003 - 2012

Numbers



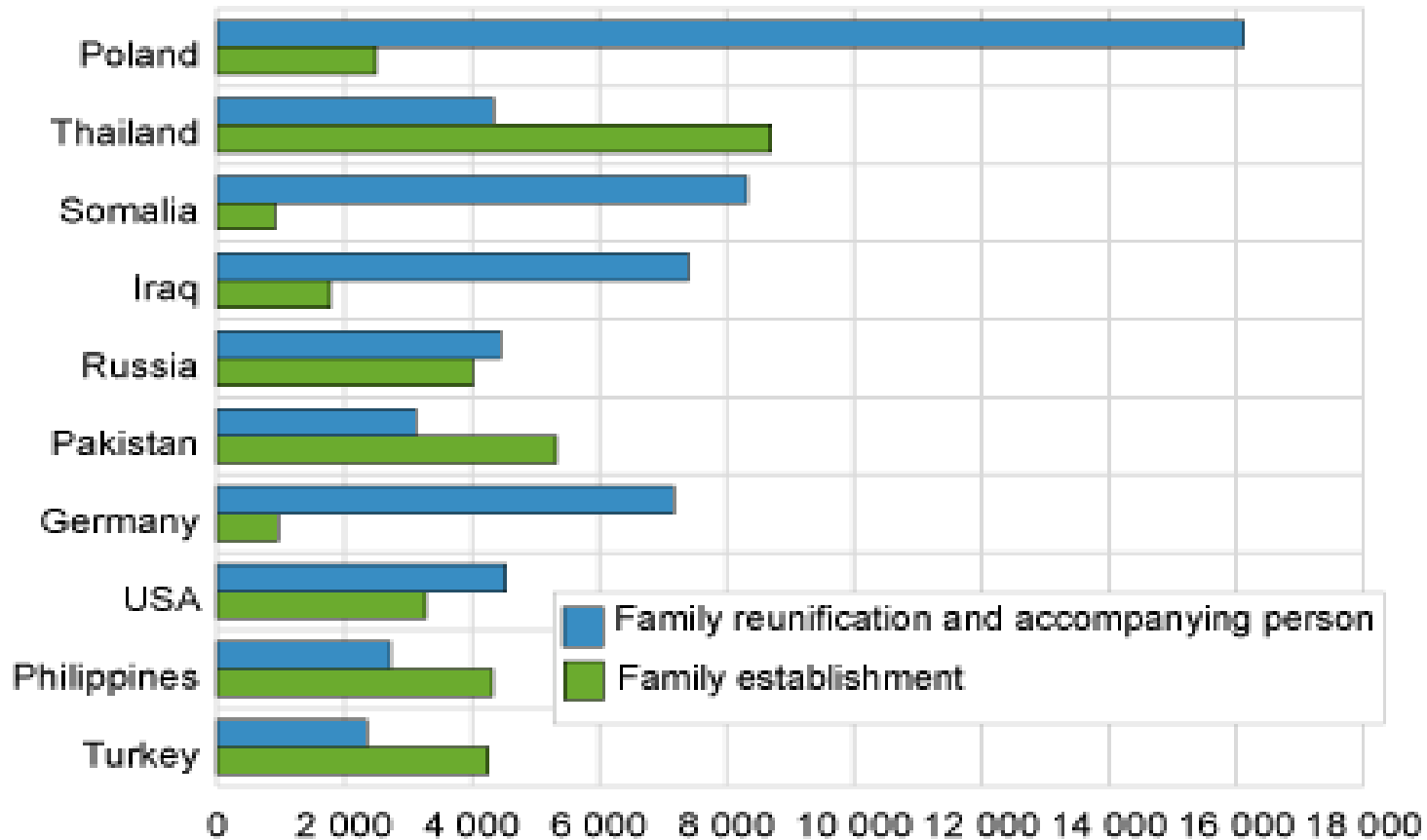
Why did immigrants come to Norway?

Immigrations by reason for immigration. 1990-2011



Family immigration to Norway, 1990 - 2011

Family immigration, the 10 largest groups. 1990-2011



Unemployment by country background, 4. quarter 2012

Non-immigrant population ¹	39 380	1.7	-2 525	-0.1
Immigrants, total	21 123	6.0	1 433	-0.1
The Nordic countries	1 180	2.5	91	0.1
Western Europe else	1 102	2.7	32	-0.1
EU countries in Eastern Europe	5 639	6.0	880	0.0
Eastern Europe else	2 077	6.4	5	-0.2
North-America and Oceania	154	2.5	19	0.2
Asia ²	6 807	7.6	191	-0.2
Africa	3 465	12.5	233	0.0
South- and Central-Amerika	699	6.1	-18	-0.3

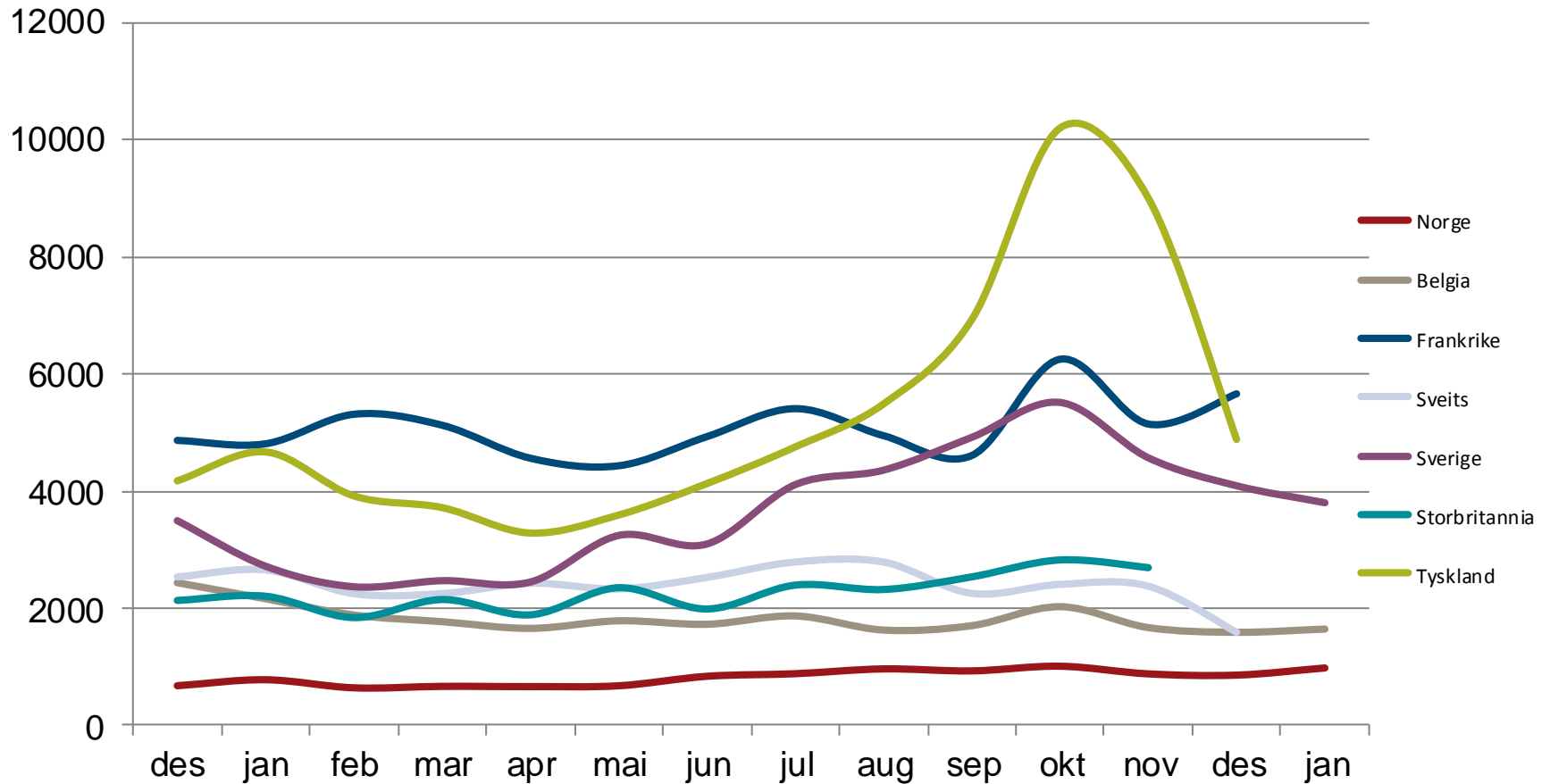
Statistics describing the regulation of immigration:

- It is important to have statistics that describe the process and outcome of regulatory activities and the persons directly affected, including statistics on
 - **Illegal migration** through statistics on
 - the apprehension and expulsion of persons found to be present without a legal basis
 - estimates of the number illegally present
 - **Asylum seekers and permits granted** on this basis
 - **Applications for and residence permits granted**,
 - Work
 - Education,
 - Family
 - Naturalizations

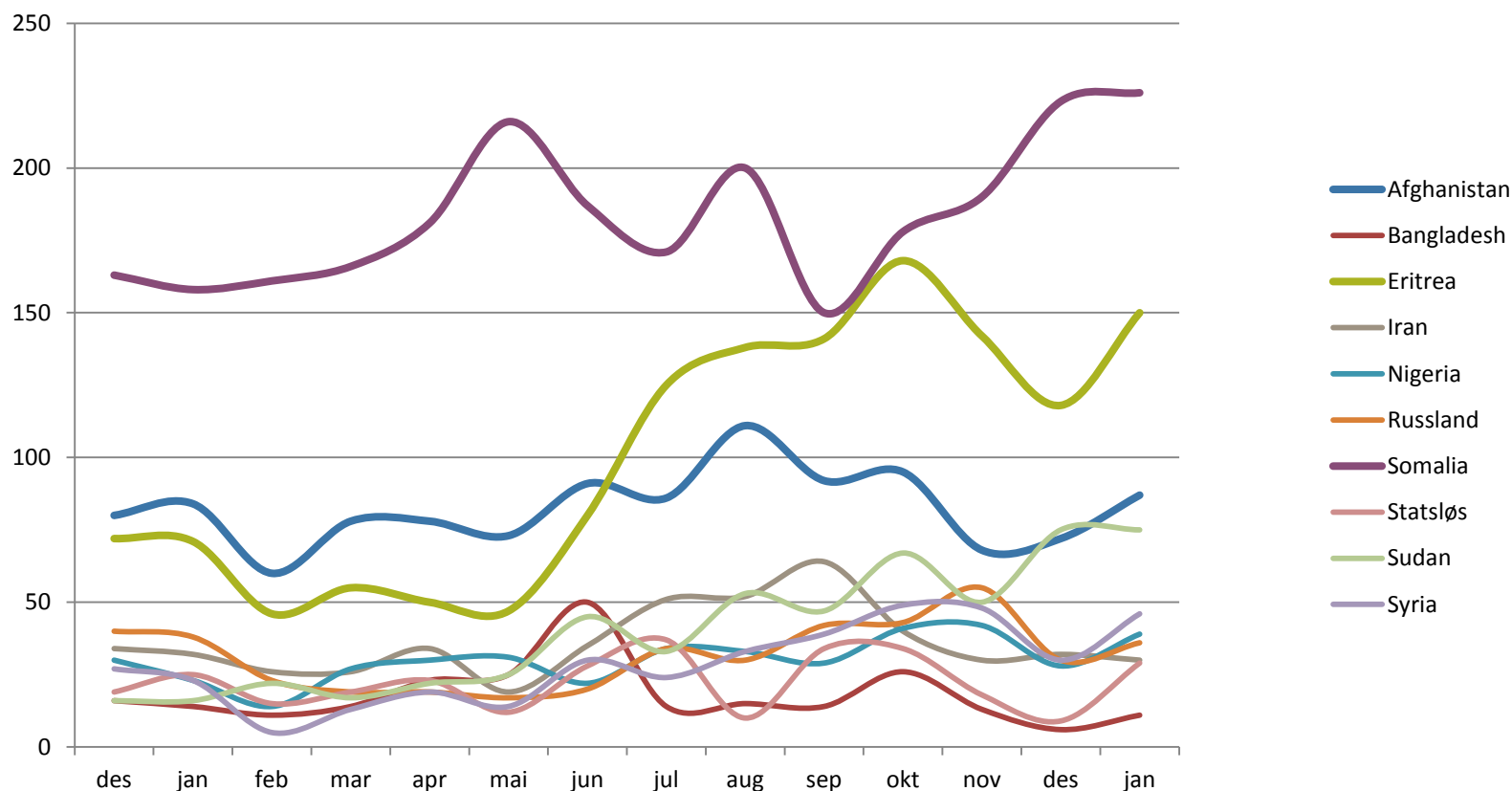
Statistics concerning citizens of the Russian Federation. Permits issued, asylum applications and expulsions, 2005 - 2012

Year	Visitors visa*	Work	Family	Education	Asylum-seeker	Permit granted to asylum seeker	Expulsion	Citizenship granted
2005	N/A	618	653	289	545	437	81	N/A
2006	N/A	806	595	321	548	326	74	N/A
2007	47583	810	658	342	863	433	61	416
2008	48518	821	607	324	1078	137	81	493
2009	41195	601	620	366	867	52	61	601
2010	46373	563	506	429	628	13	74	663
2011	52884	561	613	435	365	21	109	632
2012	51945	545	627	403	370	37	140	625

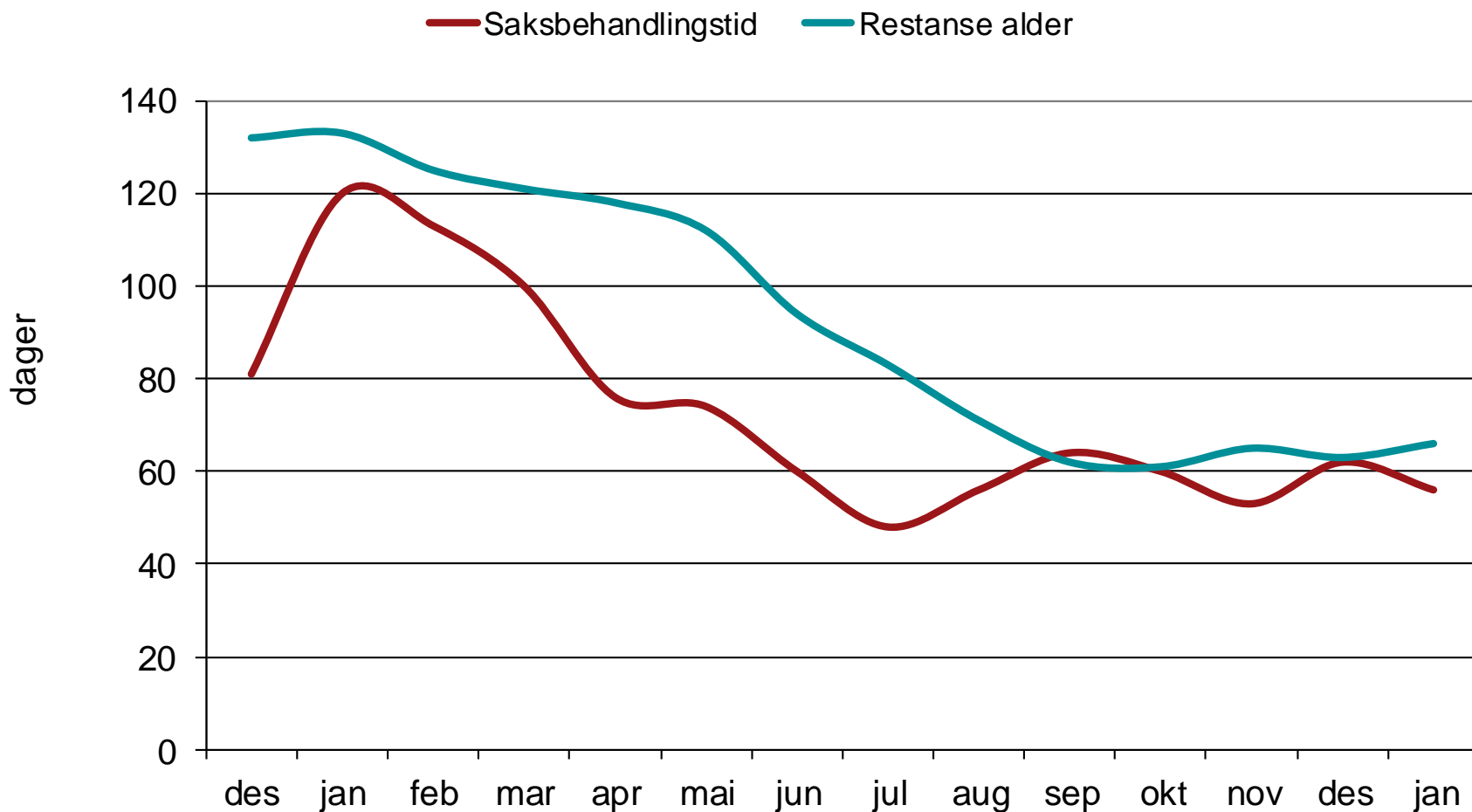
Asylum applications to some European countries, last 14 months to January 2013



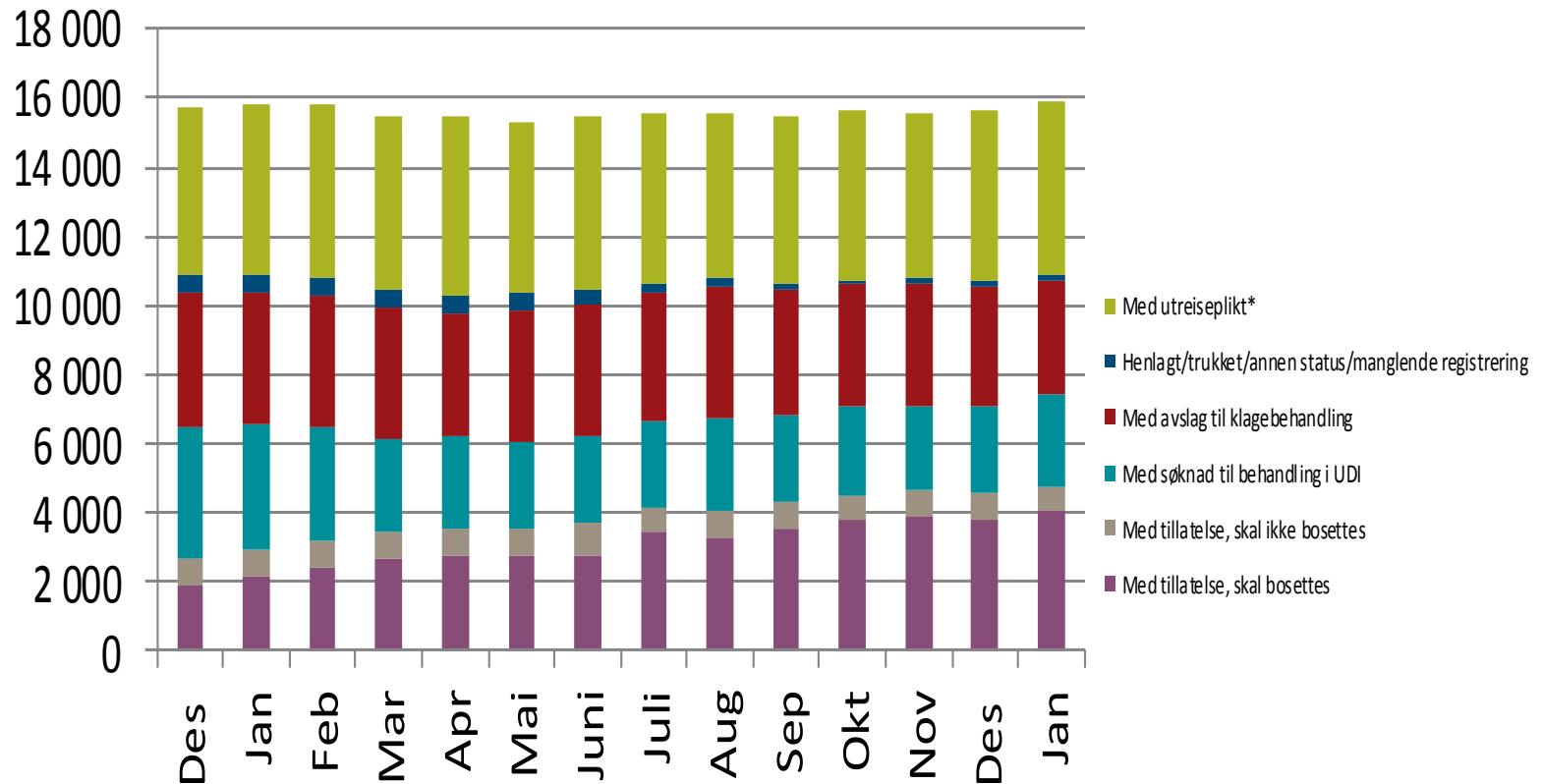
Asylum applications to Norway, 10 main countries of origin, last 14 months to January 2013



Asylum applications, median time for decisions and age of the backlog, last 14 months to January 2013 (days)

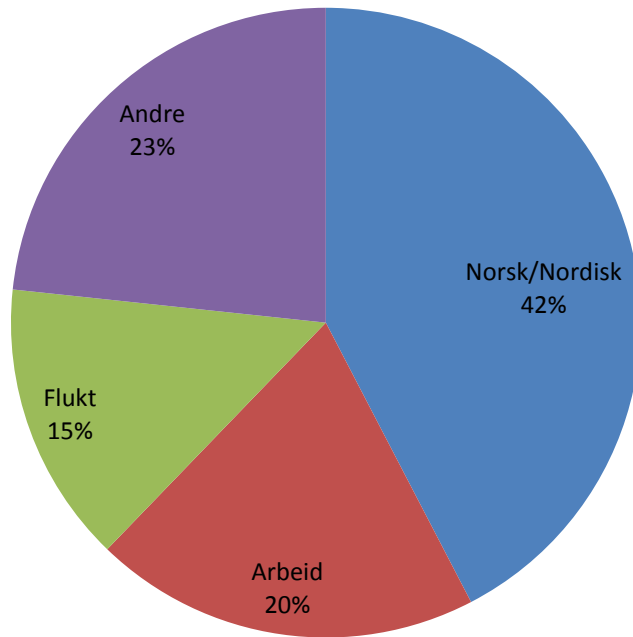


Residents in asylum reception centres, by the status of their case, last 14 months january 2013

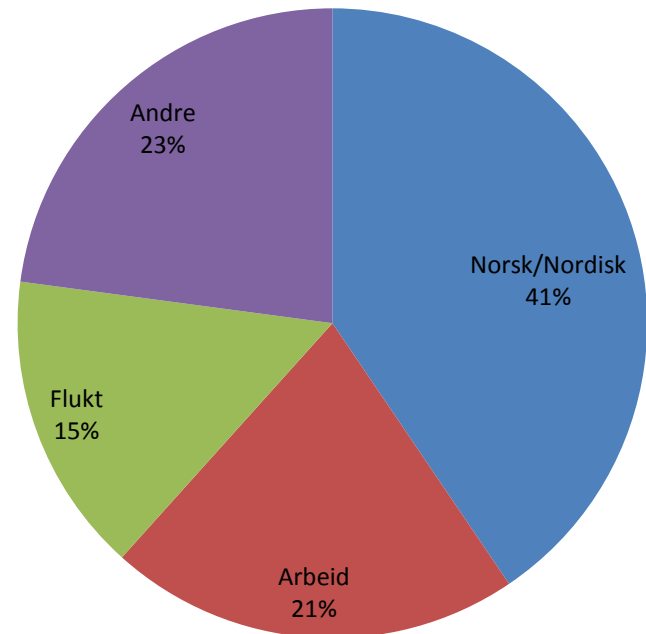


Family immigration permits granted by the situation of the reference person 2012 and January 2013, percent

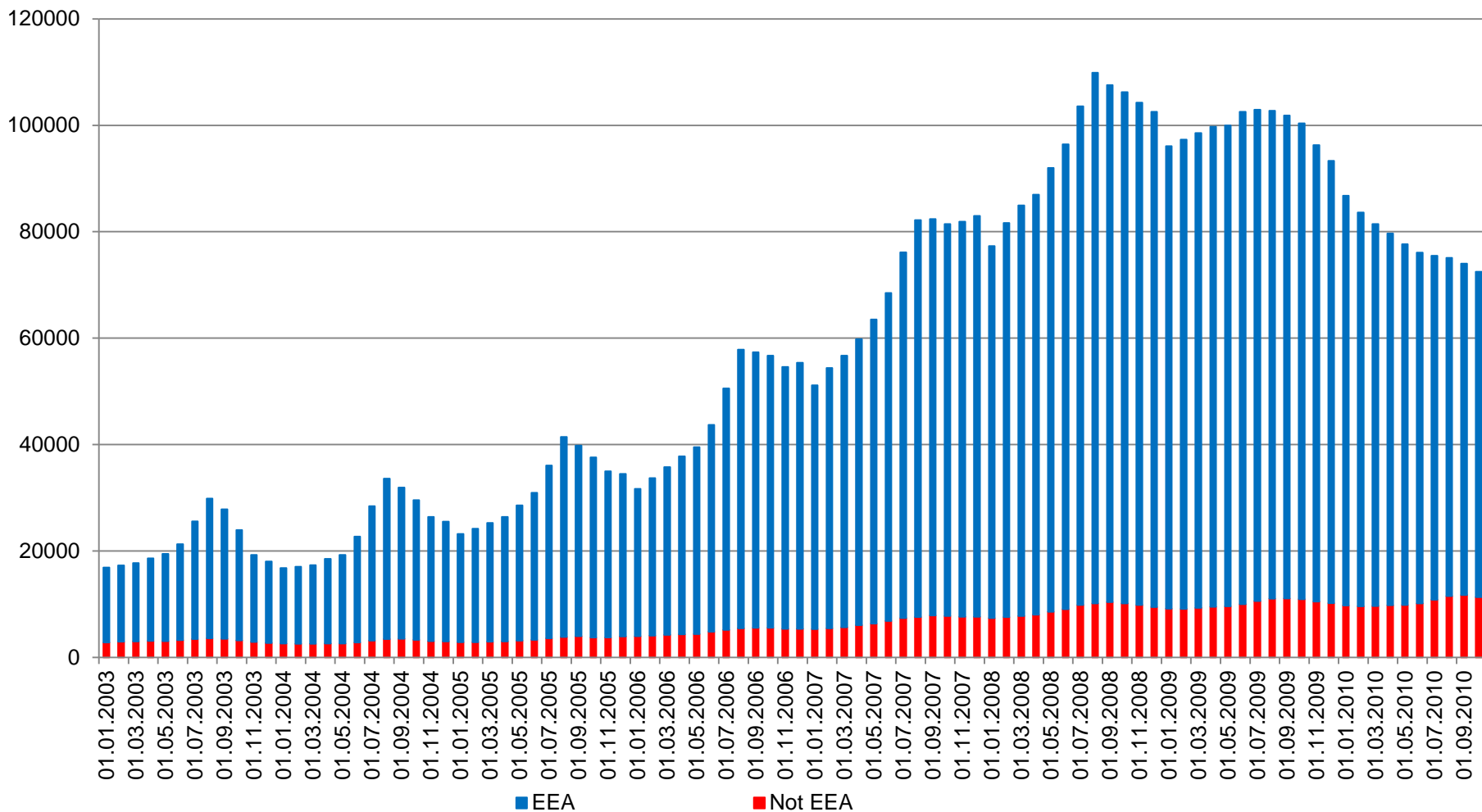
2012



Hittil 2013



Valid Work Permits. Norway. 01.01.2003 – 01.01.2010



Both effective case handling and good quality registrations require (1)

- Well designed tools for data capture:
 - Application forms/screens
 - Data entry screens,
 - Procedures and instructions for the registrations that are logical and easy to understand and use
- Controls to ensure that complete and correct data are entered
- Data stored with
 - Codes that identify
 - type of decision and outcome (legal coding set)
 - Characteristics of persons affected (general coding set)
 - All relevant dates
 - Complete event histories

Effective case handling and good quality registrations require (2)

- Good quality controls, e.g. consistency checks
- Easy accommodation of IT systems to changes
- That those responsible for system design have a good understanding of rules, regulations, working procedures **and reporting requirements**
- That those responsible for reporting have a good understanding of rules, regulations, working procedures **and system design**

Coherent migration statistics: necessary 'technical' elements

For linking registrations about the same individual

- All registrations for the same individual use the same identifier

For exchange of information and coherent statistics

- Common definitions of
 - units
 - populations
 - characteristics/variables
 - value sets (classifications)
 - time references
- Common terminology
 - The same terms for the same concepts
 - Different terms for different concepts

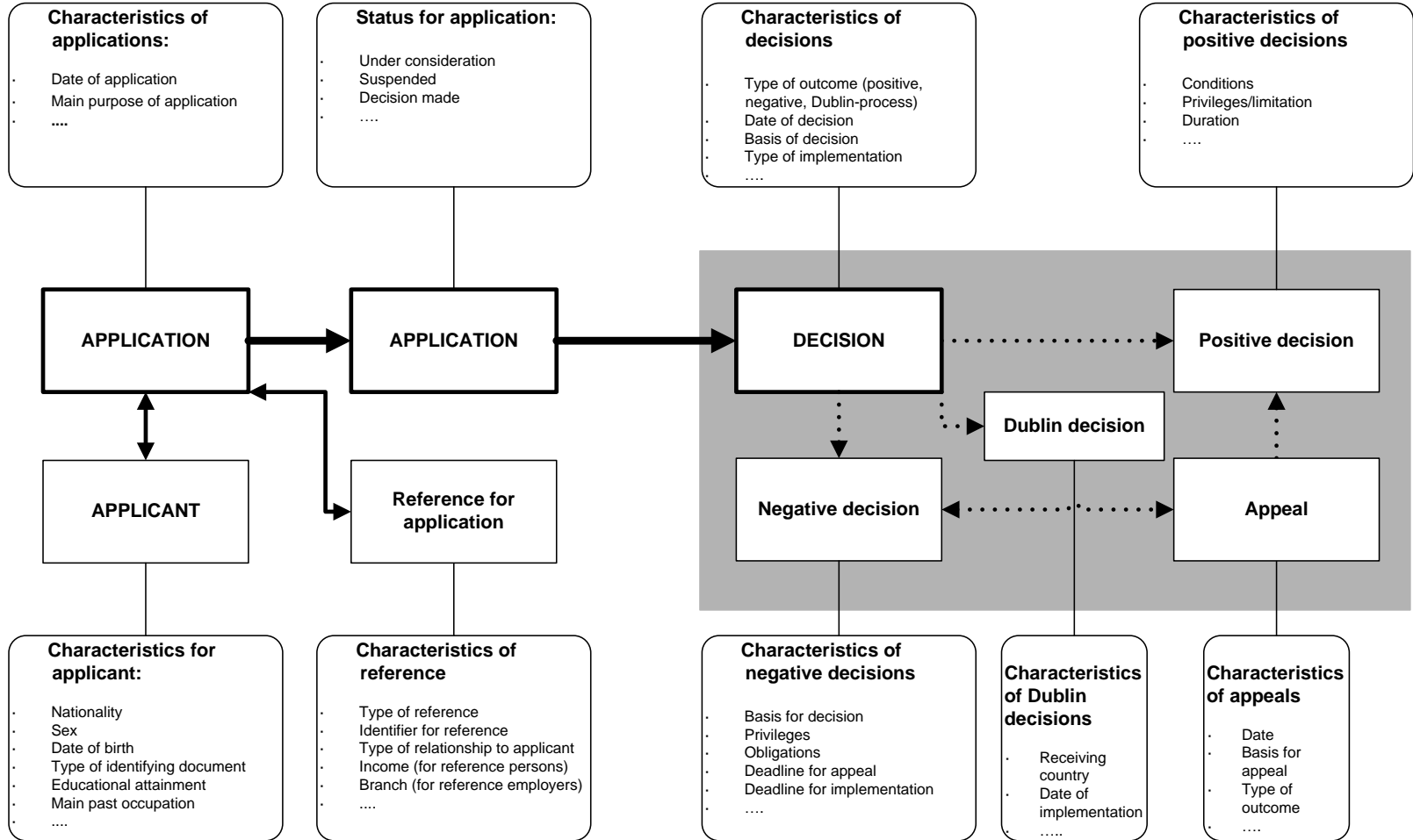
Diagrammatic presentation of possible units and characteristics in ICDFoR

Reference points for measurements:

T (time of application)

T + t

T + p (time of decision)



Cooperation and coordination between agencies requires

- Agreement and support from the respective ministries
- Agreement and involvement in the agencies by
 - Top management
 - Operational managers
 - Technical experts
 - Operational and legal experts
 - IT specialists
 - case officers who know the processes

How to succeed

- Dialogue on all hierarchical and technical levels in the involved agencies
- Follow a (flexible) plan, one step at a time
- Keep it simple for 'clients' and officers
- **Always remember the importance of data quality at all stages**
 - For correct decisions
 - For effective case handling
 - For correct reporting and correct statistics

Thank you for your attention

Eivind Hoffmann

Department for Strategy and Coordination

Norwegian Directorate of Immigration

P.O. box 8108 Dep

N-0032 OSLO

Norway

Tel: + 47 93 45 94 04

eho@udi.no

<http://www.udi.no>

UDI



Utlendingsdirektoratet
Norwegian Directorate
of Immigration

www.udi.no