

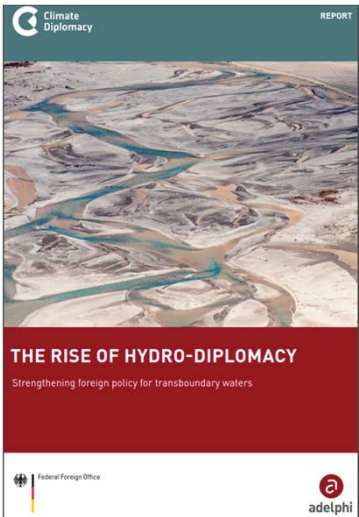




Water in the context of the global climate change agenda

Prague, September 15, 2015

Dr. Benjamin Pohl, adelphi

Background reports

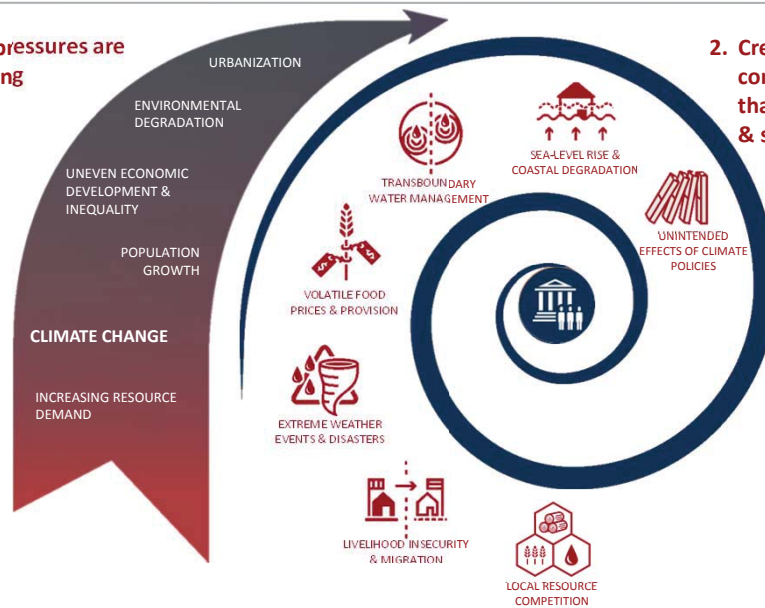


2

Seven compound climate-fragility risks threaten states and societies



1. Global pressures are increasing



2. Creating 7 compound risks that threaten states & societies

3

The impacts of climate change on water



- Changes amount and seasonality of water flows
- Climate change destabilizes:
 - By changing the natural environment
 - By providing justification for calls to challenge the (economic, political, legal) status quo
- Climate change entails opportunities:
 - Shared threat, potential platform for cooperation
 - Significant financial resources earmarked for adaptation

4

The policy agenda



Compound risks need integrated answers



- Break down sectoral barriers
- Integrate key policies and approaches across key sectors
- Resilience as the overarching goal
- In order to realize synergies and co-benefits

5

Recommendations



- **Strengthen water management institutions** to manage coming hydrological changes and resulting political challenges
- **Strengthen transboundary cooperation mechanisms**
 - Aim for joint data collection and vulnerability assessments, resulting in joint development of joint responses
 - Support transboundary cooperation as third parties, e.g. by disseminating good practices & lessons learned, systematically assessing peacebuilding potential of transboundary water cooperation, and supporting river basin organizations' access to funding, e.g. the Green Climate Fund
- **Develop and promote integrated vulnerability assessments** that integrate the assessment of environmental, social and economic systems
- **Support networks of research cooperation** to facilitate debate about challenges to development paths and promote mutual understanding

6

Thank you very much for your attention.

Dr. Benjamin Pohl

pohl@adelphi.de

adelphi

Caspar-Theyss-Strasse 14a
14193 Berlin

T +49 (0)30-89 000 68-0

F +49 (0)30-89 000 68-10

www.adelphi.de

office@adelphi.de