



**JOINT
ENVIRONMENT
UNIT**

TOGETHER
FOR A BETTER
RESPONSE.

At Environment and Humanitarian Crossroads

*Environmental Co-operation in the Time of
COVID-19 Pandemic
20 May 2020*

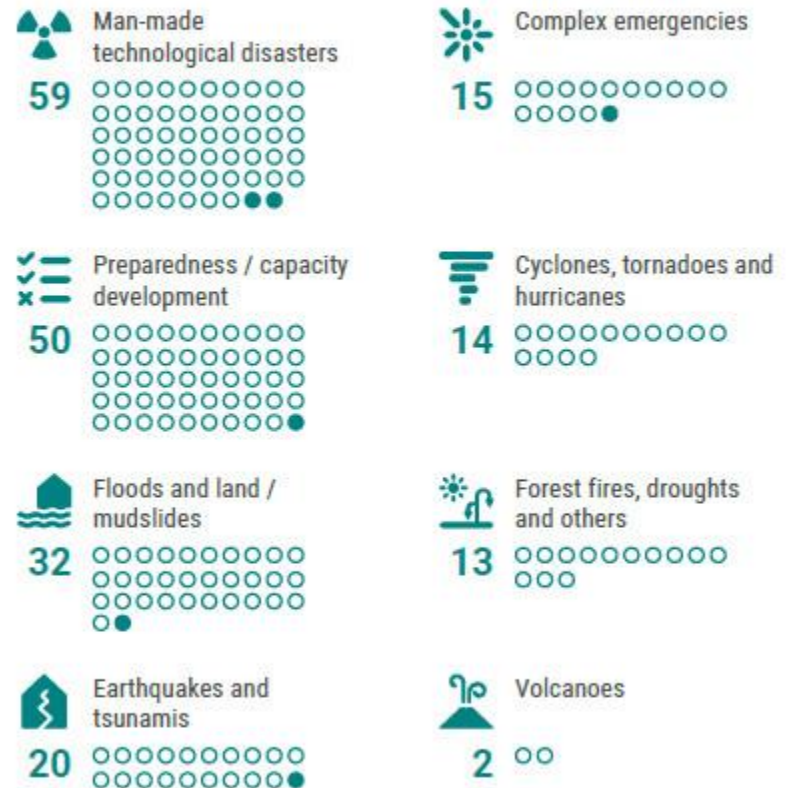
Charlotta Benedek
UNEP/OCHA Joint Environment Unit



- UNEP/OCHA Joint Environment Unit was founded in 1994 at request of UN Member States
- Global mechanism to respond to environmental dimensions of emergencies
- Combines UN's humanitarian coordination mandate with its environmental expertise

www.unocha.org/unep

The JEU mobilizes technical environmental expertise in disasters and crises through preparedness and response missions supported by a network of partners.



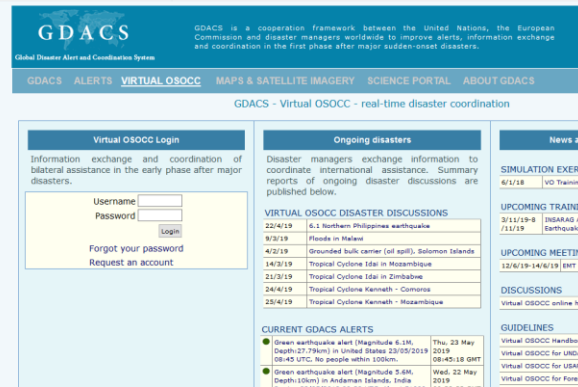
○ = 1 mission
● = 1 mission in 2018



In the first hours after an environmental emergency, the JEU can mobilise experts and equipment to the affected area

- Rapid deployment of technical experts (stand-alone or through existing response mechanisms)
- Rapid environmental assessments
- On-site sampling and analysis
- Remote Assessment & Analysis

- Austria
- ECHO
- France
- Germany
- The Netherlands
- Norway
- Singapore
- Sweden
- Switzerland
- United Kingdom
- USA
- UNEP
- OCHA



European Union
Humanitarian Aid



INTERNATIONAL
HUMANITARIAN
PARTNERSHIP IHP



1. Response to the environmental dimensions of crises

Whether in response to natural hazards, technological accidents, as a consequence of conflicts or a combination of them, the JEU can mobilize technical expertise at short notice (48 hours) for deployment to affected countries and provide remote support.

2. The environmental sustainability of humanitarian action

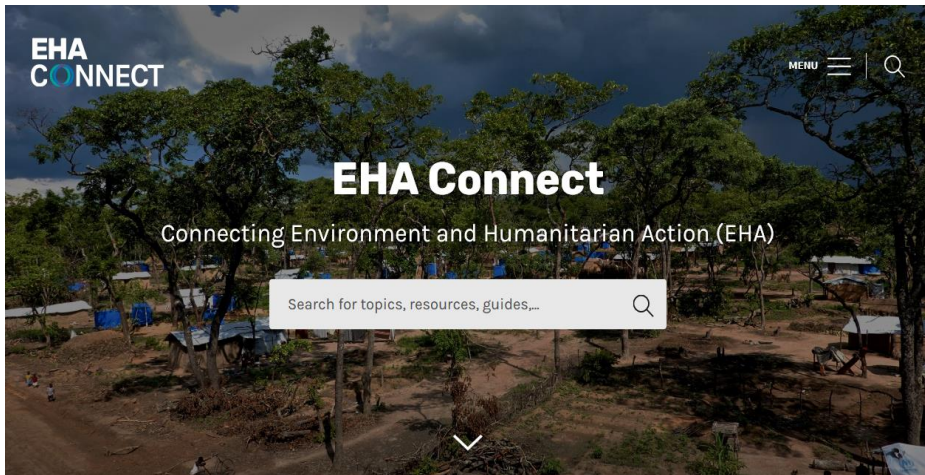
JEU coordinates with partners to adapt to climate change in humanitarian settings, increase collaboration between environmental and humanitarian actors and mitigate environmental risks in humanitarian action.



Environment and Humanitarian Action Network (EHAN)

- More than 150 experts
- Eight formal members
- Strengthen environmental mainstreaming in humanitarian action
- Joint work on policy, markers, tools and guidance





- Repository of tools, guidance and case studies, tailored for humanitarian and environmental communities
- Organized around the Humanitarian Programme Cycle
- Cluster-specific and thematic guidance

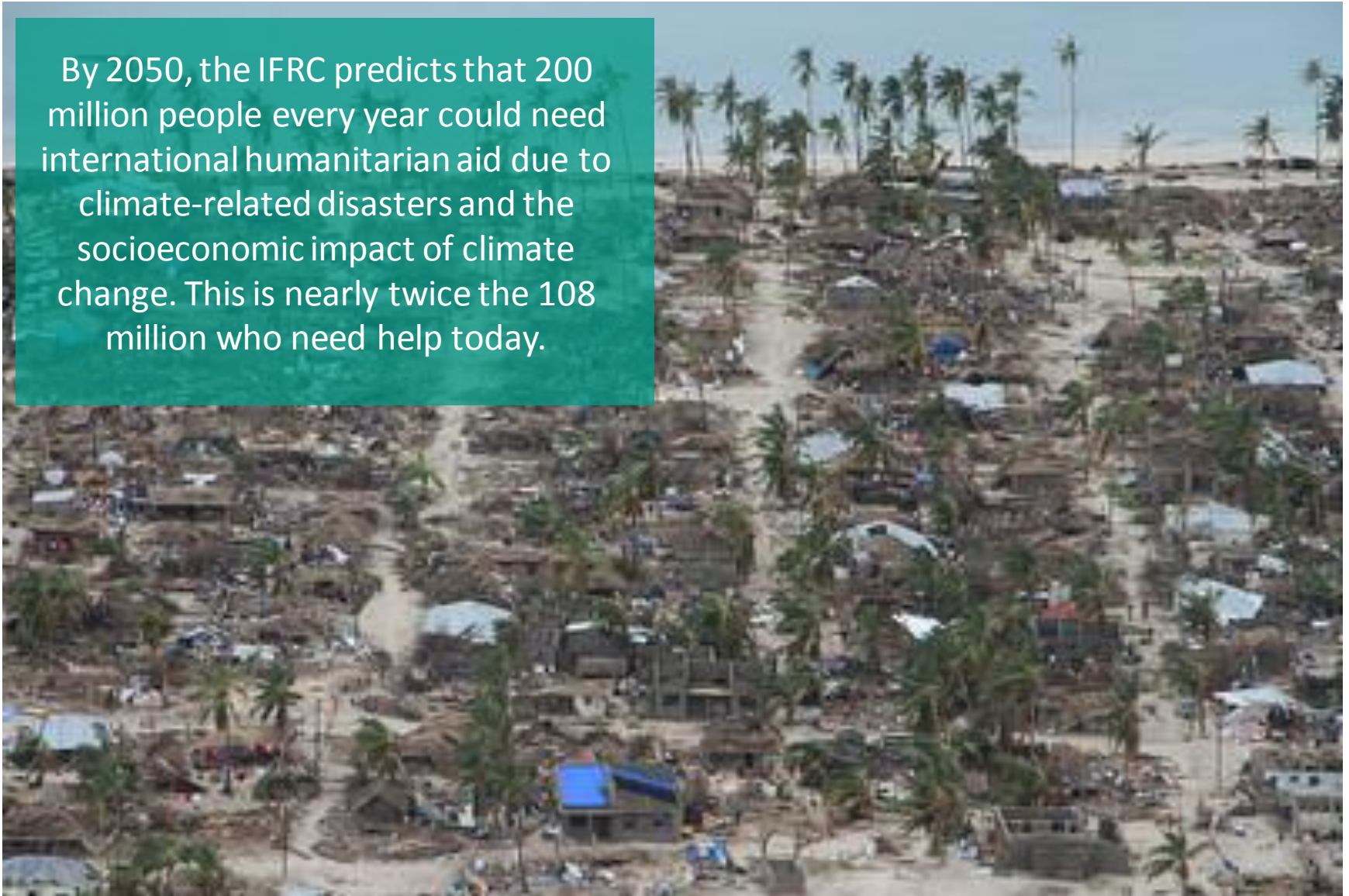
<https://ehaconnect.org/>

“Supporting preparedness for environmental emergencies”

A one-stop-shop of information, tools, trainings and guidance to inform a more prepared and effective response to environmental emergencies.

<http://www.eecentre.org>

By 2050, the IFRC predicts that 200 million people every year could need international humanitarian aid due to climate-related disasters and the socioeconomic impact of climate change. This is nearly twice the 108 million who need help today.



In addition to extreme weather events such as floods, droughts and heatwaves that wipe out crops and destroy water sources, climate change threatens agriculture, livestock and exacerbates food insecurity and malnutrition.



Climate-induced challenges are expected to drive high rates of migration, increasing pressure on coastal areas, cities and host communities, which may experience heightened fragility risks and social tensions.



Climate change represents a major cause for concern given its introduction of multiple security challenges: water scarcity, food insecurity, disruption to agriculture and energy infrastructure, livelihood insecurity, social tensions, conflict and displacement.





- Advocacy and messaging
- Project: Adaptation to Climate Change in Sub-Saharan Humanitarian Settings
 - Strengthen the capacity for climate adaptation of displaced and vulnerable
 - Burundi, Chad and Sudan
 - WFP (lead), UNHCR, UNICEF, UN Environment/OCHA Joint Unit & World Wind Energy Association (WWEA)



World Food
Programme





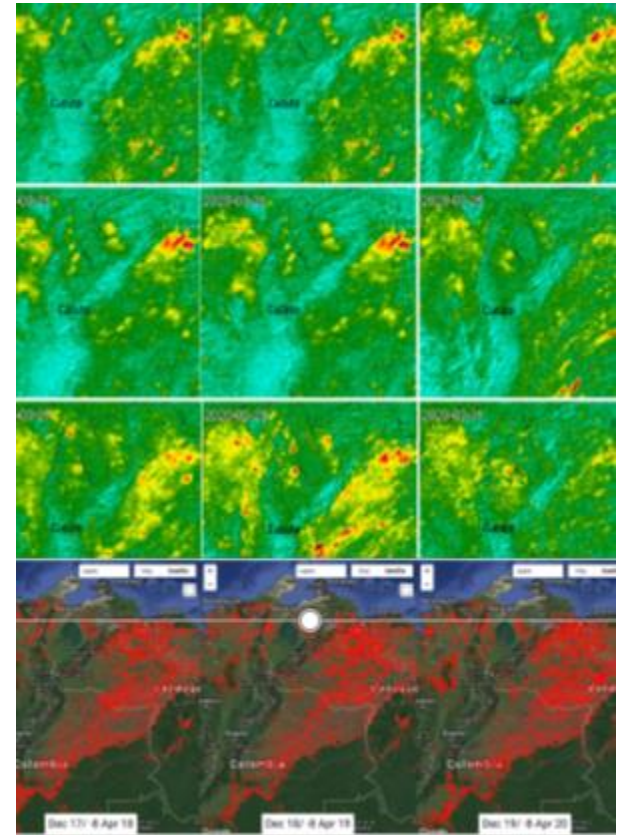
COVID-19 Pandemic: UNEP Emergency Support to Member States and the UN System



COVID-19
RESPONSE

- Technical Assistance on Healthcare and Infectious Waste Management
- Rapid Socio-Economic and Needs Assessments
- Humanitarian Crisis Engagement
- Capacity-building

- Continuity of response services under current movement restrictions
- Liaison between UNEP & WHO via OCHA
- UNEP Corporate Strategy
- UNEP COVID-19 Waste Task Force



EEC ENVIRONMENTAL EMERGENCIES CENTRE

RESOURCES | INSIGHTS | NETWORK | TRAINING | ABOUT

COVID-19

Please click here for the latest information and guidance on COVID-19 and its humanitarian and environmental impacts

[CLICK HERE](#)



**JOINT
ENVIRONMENT
UNIT**

TOGETHER
FOR A BETTER
RESPONSE.

We need to get the story about environmental risks and opportunities in humanitarian action straight. After all, if we're not even starting at the right place, we certainly will not end up at the right destination.

Thank you!

Contact the JEU to find out more
ochaunep@un.org

Follow us on Twitter
[@EnvironmentOcha](https://twitter.com/EnvironmentOcha)

