


FEMA's Use of Technology and Analytics in Disasters

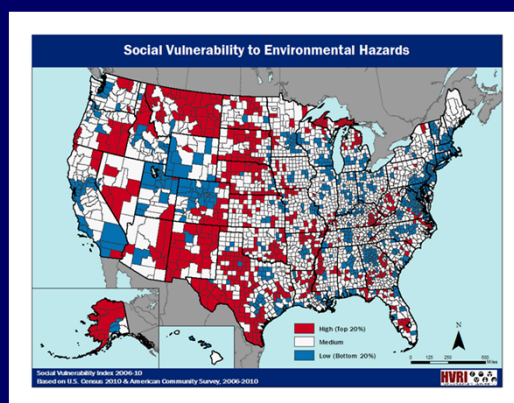
Analytics Briefing
Doug Bausch, Douglas.Bausch@dhs.gov
September 11th, 2014



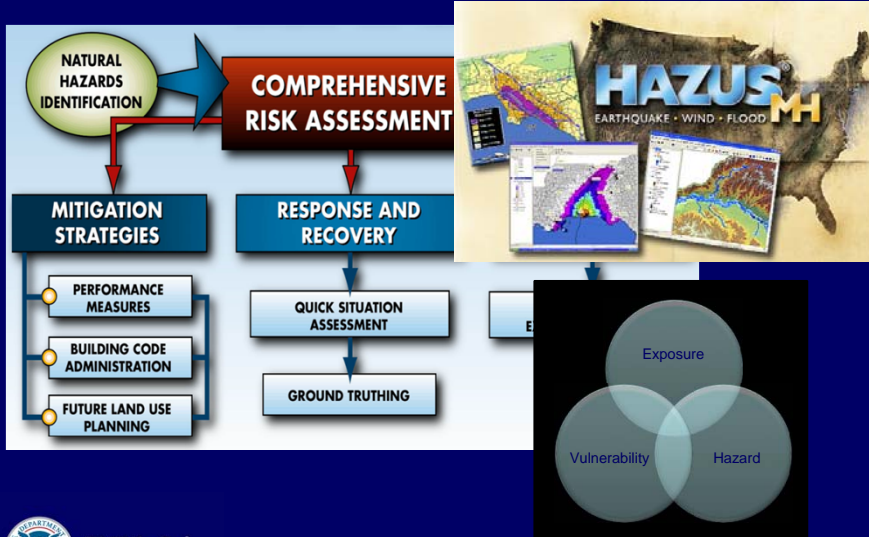
FEMA

Outline

- Risk Models
- Integration of Field Observations
- Data Analytics Applications
- Transparency/ OpenFEMA
- Crowd Sourced Information
- Recovery Issues/Tipping Point



Risk Models



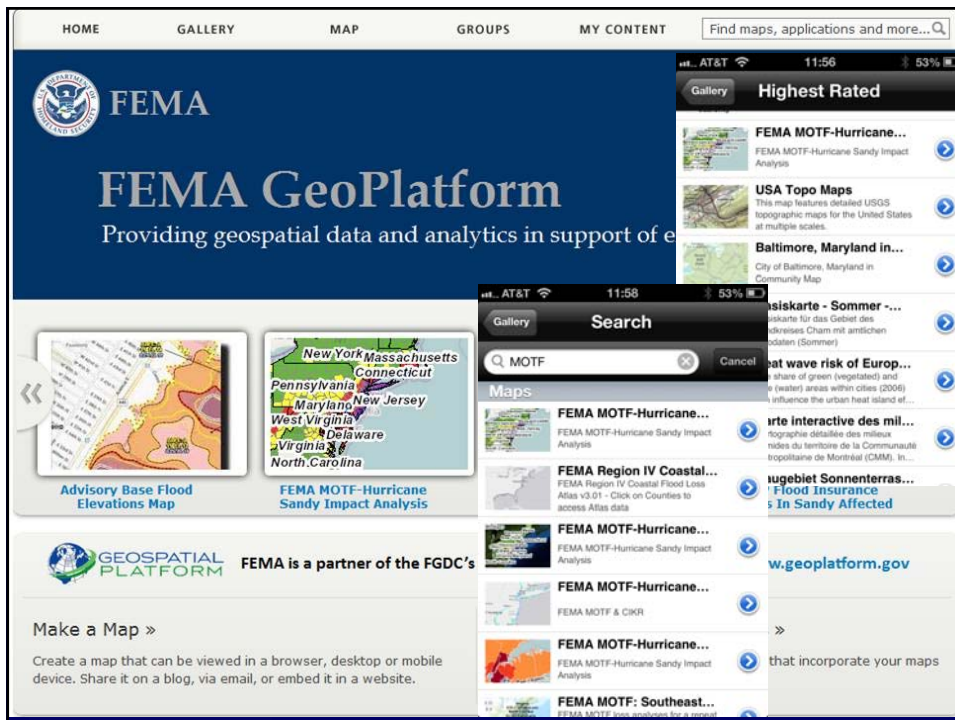
Douglas.Bausch@dhs.gov

Imagery Damage Assessments

Distributed Assessments

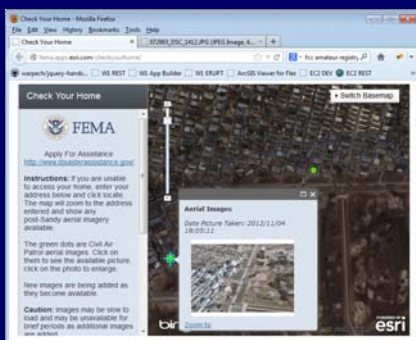


Douglas.Bausch@dhs.gov



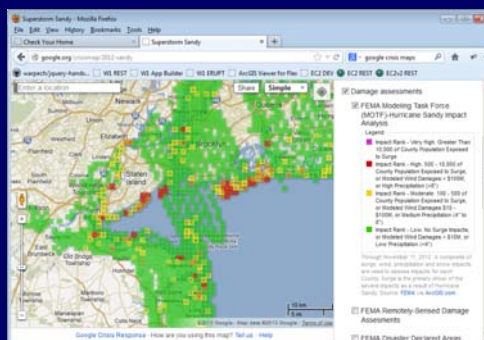
Innovation

Check Your Home



- Imagery and assessment data for public access.

External partners and crowd sourcing



USNG 1k grid output from assessments
Partnered with Google Crisis Map, over 15 million unique visits



Douglas.Bausch@dhs.gov

Conclusions/Recommendations

- Apply Data Analytics (model/observation)
- Assess Impacts Before, During and After Disasters
- Support Risk-Informed Decision-Making, Including Tipping Point



FEMA

Douglas.Bausch@dhs.gov